

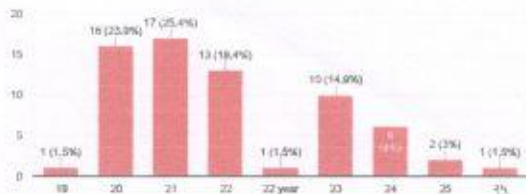


National Assessment and Accreditation Council (NAAC) Student Satisfaction Survey Key Indicator 2.7.1 Criterion II Teaching - Learning and Evaluation 2019-20

Publish analytics

A) Age

57 responses



B) College Name

57 responses

- Lbs college dharmabad
- LBS college dharmabad
- LBS college Dharmabad
- S. R. T. M. University nanded
- LBS Mahavidyalaya, Dharmabad
- L.B.S college
- Swarni Ramanand Teerth Marathwada University, Nanded
- L. B. S College dharmabad
- SRTMU Nanded

C) Gender

57 responses



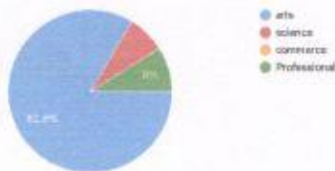
D) What degree programme are you pursuing now?

57 responses



E) What subject area are you currently pursuing?

57 responses



Student Satisfaction Survey (2019-20)



1. How much of the syllabus was covered in the class?

57 responses



2. How well did the teachers prepare for the classes?

57 responses



Dr. P. Suresh
PRINCIPAL
Lal Bahadur Shastri Mahavidyalaya
Dharmabad, Dist. Nanded

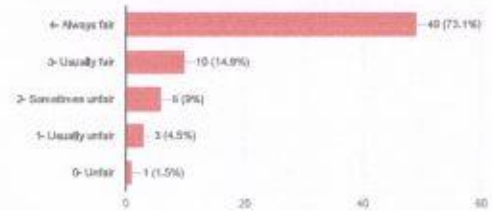
3. How well were the teachers able to communicate?

67 responses



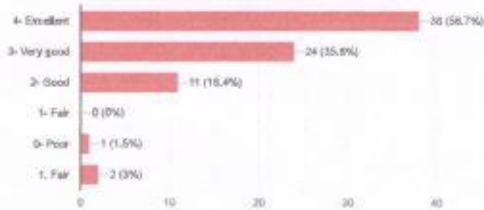
5. Fairness of the internal evaluation process by the teachers

67 responses



4. The Teacher's approach to teaching can best be described as

67 responses



6. Was your performance in assignments discussed with you?

67 responses



7. The Institute takes active interest in promoting internship, student exchange, field visit opportunities for students.

67 responses



9. The Institution Provides multiple opportunities to learn and grow.

67 responses



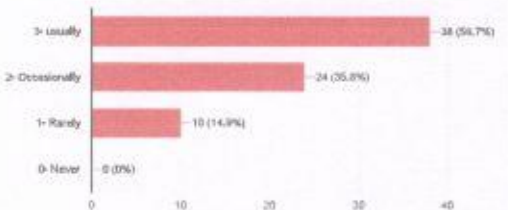
8. The Teaching and Mentoring process in your institution facilitates you in cognitive, social and emotional growth.

67 responses



10. Teachers inform you about your expected competencies, course outcomes and programme outcomes.

67 responses



Dr. P. Suresh
PRINCIPAL
 Lal Bahadur Shastri Mahavidyalaya
 Dharmabad, Dist. Nanded

11. Your mentor does a necessary follow-up with an assigned task to you.

67 responses



12. The Teachers illustrate the concepts through examples and applications

67 responses



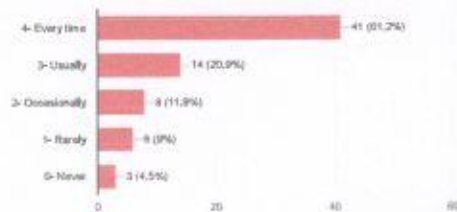
13. The teachers identify your strengths and encourage you with providing right level of challenges

67 responses



14. Teachers are able to identify your weaknesses and help you to overcome them

67 responses



15. The Institution makes effort to engage students in the monitoring, review and continuous quality improvement of the teaching learning process.

67 responses



16. The institute/ teachers use student centric methods, such as experimental learning, participative learning and problem solving methodologies for enhancing learning experiences.

67 responses



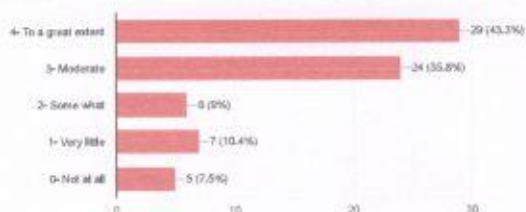
17. Teachers encourage you to participate in extracurricular activities.

67 responses



18. Efforts are made by the institute/ teachers to inculcate soft skills, life skills and employability skills to make you ready for the world of work.

67 responses

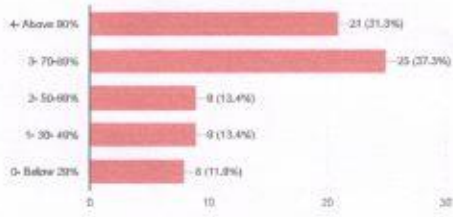


Du J Surbhadar
PRINCIPAL

Lal Bahadur Shastri Mahavidyalaya
Dharmabad, Dist. Nanded

19. What percentage of teachers use ICT tools such as LCD projector, multimedia, etc. while teaching

67 responses



20. The overall quality of teaching-learning process in your institute is very good

67 responses



This content is neither created nor endorsed by Google. [Report Abuse](#) - [Terms of Service](#) - [Privacy Policy](#)

Google Forms



Dr. P. Suresh Babu
PRINCIPAL

**Lal Bahadur Shastri Mahavidyalaya
Dharmabad, Dist. Nanded**